

N Gauge Footbridge Assembly Instructions 02

Decide on step formation A, B, C, D, E or F.

Read full instructions before starting construction!

Step 1 - Very carefully sand both sides of all the plastic components with 240 grit. This is easier done while the pieces are still in the frets.

For step formation A, E or F cut both 'x' and 'y' off part 1a along the etch line and leave part 1b as it is. For form B, C or D cut 'x' off part 1a and 'y' off part 1b.

Step 2 - Begin by laying out the sides of the steps (parts 2a, 2b, 3a and 3b) so you know which way round your steps go.

Step 3 - Lay part 2a down flat and slot a few of the treads of the steps into the holes in part 2a at 90 degree angles and slot the landing (part 8a) into place. Use solvent* to glue them. Then slot part 3a onto the other end of these 3 steps. Next, slot the rest of the steps through the holes (using tweezers and patience!) and glue in place. Repeat with the other set of steps and set to one side.

Next decide how long you would like the main span of the bridge to be. If you are keeping the bridge the full length, please ignore steps 4, 5 and 10.

Step 4 - Cut part 4 in two places down the etch line. It is important that you cut a section out of the middle rather than just shortening the bridge at one end, as the spacing of the tabs are different at the ends. Where you cut will depend how long you want the main span of the bridge to be. Remove and discard the middle section.

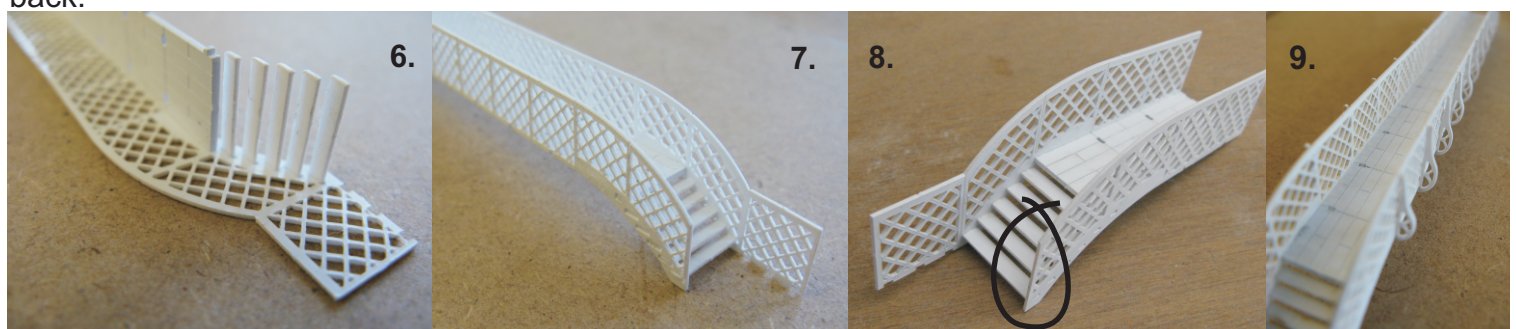
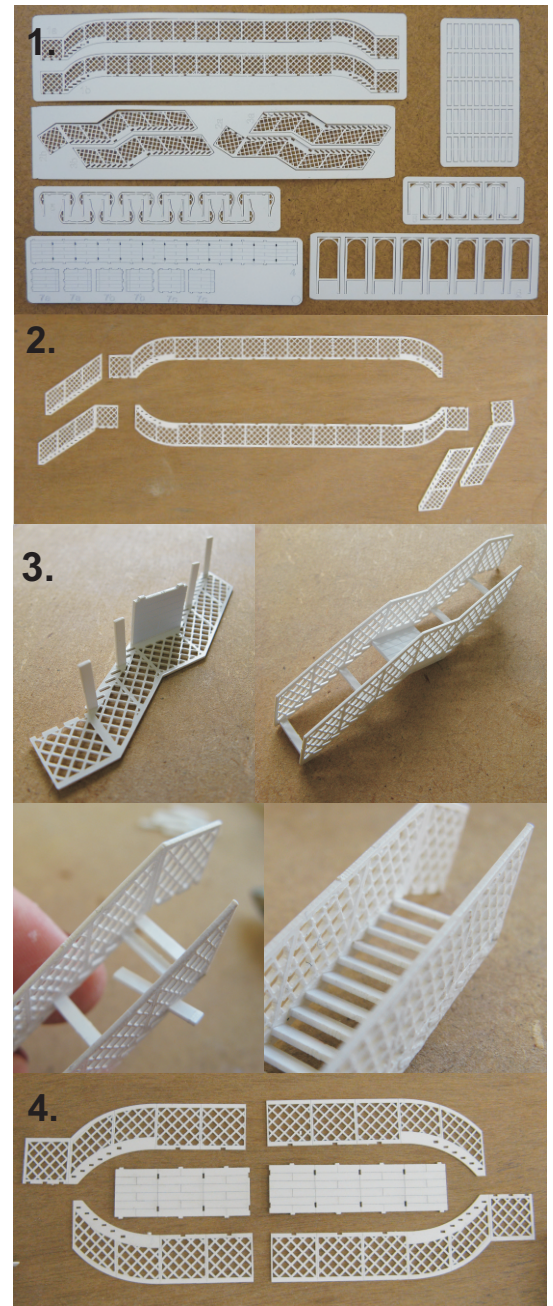
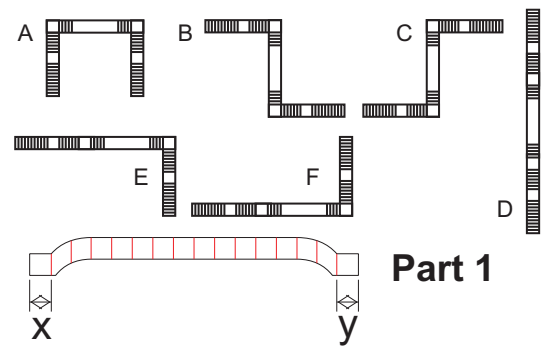
Step 5 - Cut parts 1a and 1b to correspond with the cuts you have just made to part 4 remembering that the length of the floor span (part 4) extends to the middle of the curved section, not just to the length of the straight part of the sides (part 1). Again, discard the middle section.

Step 6 - Slot part 4 into place at a 90 degree angle to part 1a and glue together. Slot the 5 steps into the holes and glue in place.

Step 7 - Slot part 1b into position and glue together. Repeat for the other half of the main bridge if you shortened the main span, if you left it full length this can all be done in one go.

Step 8 - For the ends of the main bridge section which will have steps attached at a 90 degree angle you will need to sand back the shorter side (circled in photograph 8) so that it is flush with the bottom step. For any straight step formations do not sand this part back.

Step formations



Step 9 - Remove parts 5 from the fret and position through the holes on part 4. Glue in place underneath the bridge and up both sides.

Step 10 - Turn the two halves of the main bridge upside down and align so the holes match. Use solvent to stick the two parts together. Attach the last part 5 and glue in place. This will give the two halves extra support and will cover the join line on the outside. Set to one side.

Attach the landing between the steps and the main bridge span. For step formation A use one of part 7a and one of part 7b, for form B use two of parts 7a, for form C use two of parts 7b, for form D use two of parts 7c, for form E use one 7a and one 7c and for form F use one 7b and one 7c.

Step 11- Glue the landing onto the top of the stairs.

Step 12- Connect the steps with the landing on it to the main part of the bridge and glue in place. Run some solvent down where parts 1 and 2 join.

Step 13 - For the supports underneath the landing (parts 6 and 9), glue four of the parts together in a square shape. This is easier to do when they are upside down and on a flat surface. Repeat for the other landing supports.

Step 14 - Turn your bridge over and glue the landing supports you have just made to the underside of the landings.

Step 15 - The construction slots can be filled and sanded before painting your finished footbridge.

*You will need to use a good quality solvent such as EMA Plastic Weld or Delux Plastic Magic.

N.B. Slight variations in the thickness of the plastic may mean that you will have to sand back edges to make your finished bridge neater.

